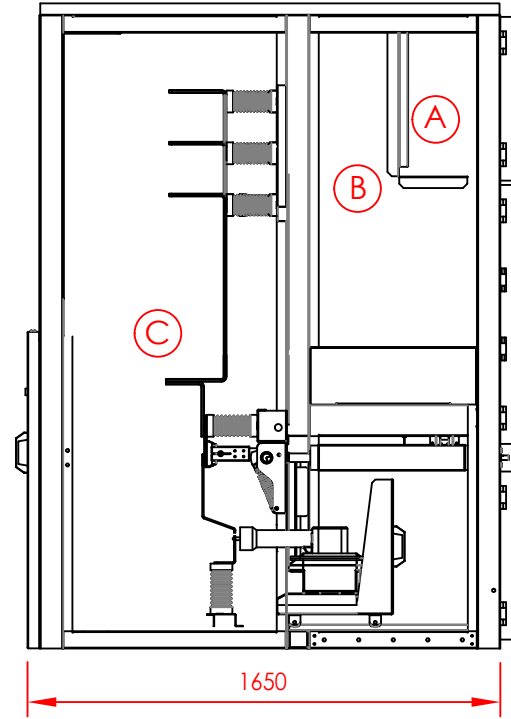
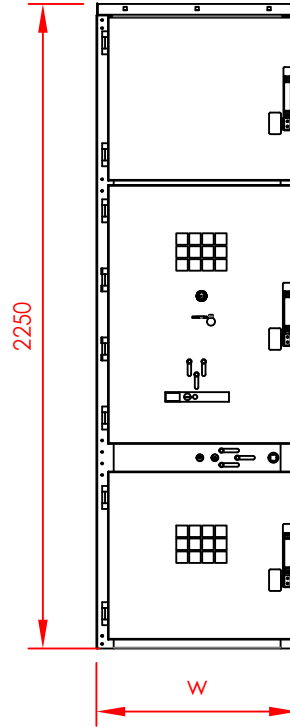
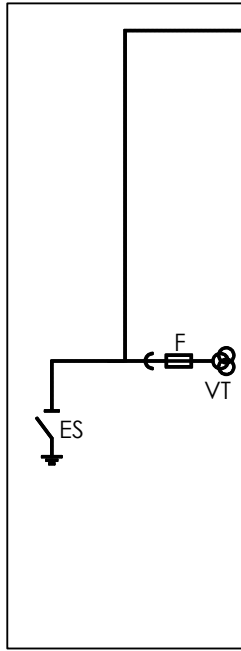


17.5kV Bus Metal-Clad Switchgear for Protection Transformer
17.5kV Trafo Koruma Hücresi



17.5kV	630-1250A	2000-2500A	2500-3150A
w	700	850	1100

- (A) LOW VOLTAGE COMPARTMENT
ALÇAK GERİLİM BÖLMESİ
- (B) CIRCUIT BREAKER COMPARTMENT
KESİCİ BÖLMESİ
- (C) BUS-BAR COMPARTMENT
BARA BÖLMESİ